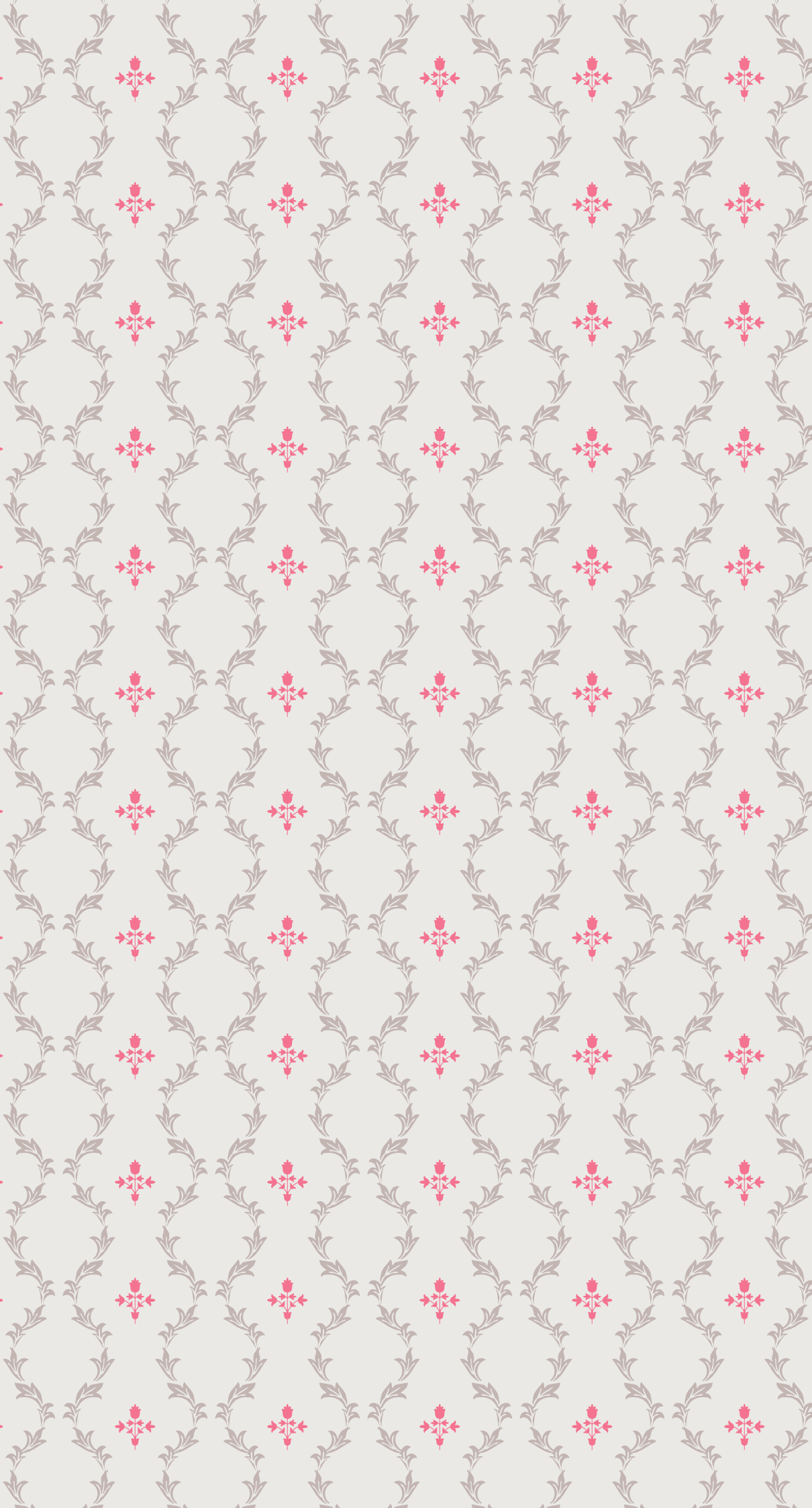


Earlscliffe

---



**Sixth Form**



## A WARM WELCOME TO EARLSCLIFFE

At Earlscliffe, we offer a distinctly different educational experience: a small, ambitious and truly international school where every student is known, supported and inspired to excel. Our size enables us to combine academic rigour with exceptional pastoral care in a close-knit environment where students feel confident, connected and ready to thrive.

Our academic model is purposeful and exacting, characterised by small classes, intensive teaching and rigorous progress tracking. We offer a carefully curated range of programmes, including a one year GCSE, A-levels, a University Foundation Year and a Diploma in Business and Management, providing clear and flexible pathways to higher education. Alongside this, a rich programme of academic enrichment and leadership opportunities ensures that each student's ambitions are not only nurtured, but surpassed. This focused approach leads to excellent outcomes.

Our students progress to leading universities in the UK, including top Russell Group institutions, as well as prestigious universities across Europe and North America. Earlscliffe is a community of intellectual curiosity and global perspective. We cultivate joyful, inquisitive learners who engage deeply with their studies and with the world around them. Here, ambition is not simply encouraged, it is translated into purposeful action, underpinned by responsibility, integrity and respect.

Students are encouraged to be ambitious, connected and exceptional, developing into thoughtful, reliable individuals ready to contribute meaningfully in a complex world. Earlscliffe offers a rare balance of focus, community and opportunity, where students flourish and prepare to shape their global future.

It is a privilege to lead Earlscliffe, and I look forward to welcoming you to experience all that our school has to offer.

Nicola Robinson  
Headteacher

## EARLSCLIFFE LOCATION AND CAMPUS

Earlscliffe is exceptionally well connected. High-speed trains from Folkestone Central railway station reach London in just 54 minutes, making the capital easily accessible for university visits, cultural trips and international travel connections. Folkestone also sits beside the Channel Tunnel, providing fast links to continental Europe, while several major international airports — including London Gatwick and London Heathrow — are within easy reach, giving students convenient access to destinations around the world.

### EARLSCLIFFE TO:

**London St Pancras International**  
75 miles/120 km  
54 minutes by direct train

**London Gatwick Airport**  
71 miles/114 km  
1 hour 15 minutes by car

**London Heathrow Airport**  
95 miles/153 km  
1 hour 30 minutes by car

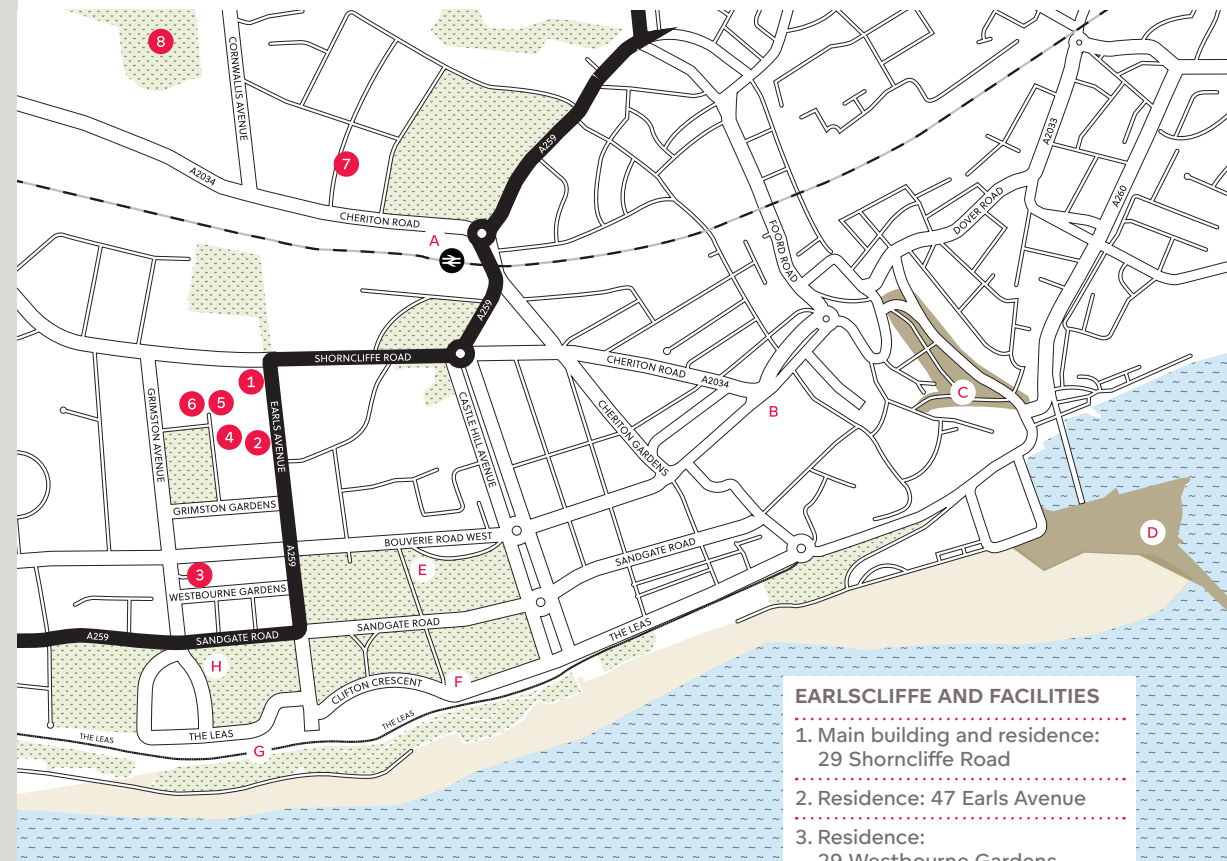
Approximate distances and travel times



Earlscliffe's campus is located in a quiet residential area close to the town centre and the seafront. The school occupies elegant period buildings that have been carefully adapted to create a modern academic environment, with small teaching spaces, specialist study areas and comfortable student residences — all within easy walking distance. This compact campus layout helps create a close-knit, supportive community where students can focus on their studies while enjoying the benefits of life in a distinctive and well-connected coastal town.

### KEY PLACES IN FOLKESTONE

- A. Folkestone Central train station
- B. Bouverie Place shopping centre
- C. Folkestone Creative Quarter
- D. Harbour Arm
- E. The Relish boutique B+B
- F. The View Hotel, a member of Radisson Individuals
- G. Leas promenade
- H. The Grand Hotel



### EARLSCLIFFE AND FACILITIES

1. Main building and residence:  
29 Shorncliffe Road
2. Residence: 47 Earls Avenue
3. Residence:  
29 Westbourne Gardens
4. School House:  
24 Grimston Gardens
5. Residence:  
25 Grimston Gardens
6. Residence and classrooms:  
26 Grimston Gardens
7. Residence: 10-14 Julian Road
8. Three Hills sports centre and astro pitches



## WHY CHOOSE EARLSCLIFFE?

Earlscliffe is a UK sixth form college founded on the simple principles of preparing international students for UK and global university entry, through focused teaching and a myriad of opportunities for personal development.



Earlscliffe offers students aged 15-19 years a 'home from home' environment which is welcoming, safe and comfortable. The small community of around 150 students from all over the world truly is a global village, in which cultural exchange, sporting opportunity and meaningful community service flourish. Personalised pastoral care and support are offered without being intrusive.

*We are international.*

*We have always been international.*

*We are Earlscliffe.*

## KEY FEATURES

A strong academic approach: weekly TRaC™ testing, small classes and intensive teaching

A small school offering a welcoming, comfortable and safe environment

A truly international environment with 48 different nationalities represented

A varied and meaningful extracurricular programme including weekly sports, clubs, societies and community service

A UNESCO associated school

Award-winning pastoral care and support (Winner of BSA Award for Supporting International Boarders in 2025)

A Tottenham Hotspur Football Development Programme as well as a Basketball Academy

A great location by the beach, yet close to central London (54 minutes by train)



## STUDYING AT EARLSCLIFFE

One-year GCSE/Pre A-level  
A-level  
University Foundation Year  
Diploma in Business  
and Management  
Academic Integration Short Courses

Earlscliffe offers a range of academic programmes designed to support entry to leading universities in the UK and internationally. Students aged 15+ often begin with our fast-track one-year GCSE programme, while most aged 16+ pursue our established two-year A-level course. For those seeking an accelerated route to higher education, we also offer a one-year University Foundation Year or the Diploma in Business and Management.

Many of the UK's leading universities belong to the Russell Group, and a large proportion of Earlscliffe students apply to these institutions during the Michaelmas term of their final year. From the outset, we help students select the A-level subjects best suited to their ambitions and guide them carefully through the university application process.

Across all programmes, students benefit from the distinctive Earlscliffe approach: small classes, regular progress testing and a strong emphasis on academic enrichment and university preparation.

### KEY FEATURES

Clear pathways to leading UK and international universities  
Guidance on A-level subject choices and university applications  
Small classes with personalised academic support  
Weekly progress testing and structured academic monitoring  
Academic enrichment beyond the classroom  
English Language Centre of Excellence



### SAMPLE WEEKDAY

#### Morning — Academic Focus

08:30-09:00 Tutor group / forum  
09:00-10:15 Lessons  
10:15-10:30 Break  
10:45-12:00 Lessons  
12:00-12:45 Lunch

#### Afternoon — Study & Enrichment

12:45-14:15 Lessons  
14:15-14:30 Break  
14:30-16:45 Languages / UCAS / study

#### Evening — Activities

16:45 Clubs, coaching, gym  
18:00 Supper  
19:00 Study / sports / trips / film night



## ONE YEAR GCSE

English Language  
Mathematics  
Science  
Humanities  
Native language

Many students choose the examined route, typically taking up to five GCSE/IGCSEs in one year. Others use the Pre A-level year or term to step out of their own country's academic system, improve their English, study academic subjects and immerse themselves in boarding life.

Students are fully integrated into college life, joining sports, cultural activities and enrichment, alongside A-level peers. As with all Earlscliffe programmes, teaching is intensive and personalised, with small classes and weekly TRaC™ testing to track progress.

### KEY FEATURES

Up to five GCSE/IGCSEs in one year  
Fully integrated into A-level college life  
Small classes with intensive, personalised teaching  
Weekly TRaC™ progress testing  
English plus academic subjects  
Designed for international students  
Pre-A-level or Pre-IB pathway  
UK Year 11 equivalent (ages 15+)

## A-LEVEL

Art  
Biology  
Business  
Chemistry  
Economics  
English Literature  
Further Mathematics  
Geography  
History  
Mathematics  
Photography  
Physics  
Politics  
Psychology  
Chinese  
French  
German  
Italian  
Japanese  
Russian  
Spanish  
Turkish

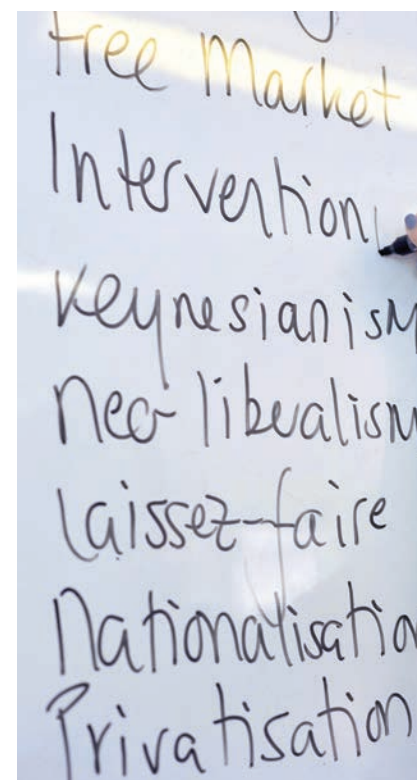
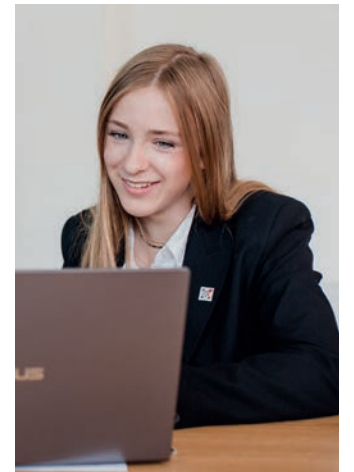
Students typically study four A-level subjects, including their native language, focusing on traditional, academically rigorous courses valued by leading universities. Non-native English speakers take the IELTS exam if required.

Students also complete the Extended Project Qualification (EPQ), an independent research project that develops skills in research, critical thinking, and extended writing, while demonstrating intellectual curiosity and readiness for university study.

We also offer the Pearson BTEC Level 3 Extended Certificate in Sport, equivalent to one A-level.

### KEY FEATURES

Four A-levels, including the student's native language  
Extended Project Qualification (EPQ)  
IELTS preparation  
Small classes, averaging seven students  
Up to nine lessons per subject each week  
Weekly TRaC™ testing  
Intensive teaching  
1:1 UCAS counselling  
Traditional route to top UK universities  
Optional BTEC Sport qualification



## DIPLOMA IN BUSINESS AND MANAGEMENT

Business Environment  
Business Organisation  
Business Communications  
Working in Teams  
Market Research  
Business Finance  
Leadership & Management  
Principles of Marketing & Sales  
Human Resources Management

Completed in one year and equivalent to two A-levels, this course comprises nine modules in business and management. Assessment is continuous, through written tasks, presentations and a portfolio, with final grades of Pass, Merit or Distinction. It is designed for students aged 17+ who wish to focus on business and prefer coursework over final exams, and is open to UK and international students.

The qualification (Ofqual 610/1761/9, NQF Level 3 / EQF Level 4) provides progression to reputable UK degree programmes. Students usually also take their native language at A-level plus one additional academic subject.

### KEY FEATURES

One-year course  
Fully internally assessed (no final exams)  
Leads to UK university entry  
Includes 1:1 UCAS counselling  
Accredited by ATHE  
Equivalent to two A-levels  
To be taken with own language or another subject as a third A-level

## UNIVERSITY FOUNDATION YEAR

Four pathways:  
STEM  
Business Economics & Management  
Humanities  
Creative Arts

Our University Foundation Year (UFY) offers a choice of four popular pathways to UK university entry. It covers key topics in the chosen field, supplemented by research and writing skills, critical thinking and academic English.

The UFY is a bridge between school and university, which provides a balance of independence and support within a community environment.

This course is suitable for students who want a one-year pre-university course and/or perform better when continuously assessed, rather than by final, high-pressured exams. Assessment includes internal tests, assignments, essays, projects, end-of-term exams and science practical work. Final grades are awarded as Pass, Merit or Distinction.

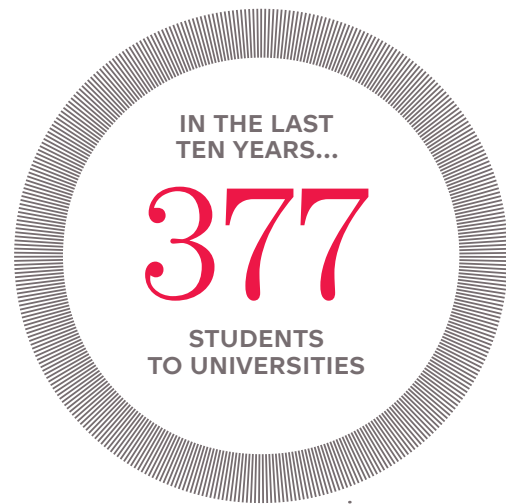
### KEY FEATURES

One-year course  
Fully internally assessed (no final exams)  
Leads to UK university entry  
Includes 1:1 UCAS counselling  
Accredited by NCFE  
Included in the course:  
Three academic subjects, English Language and IELTS preparation



## UNIVERSITY PATHWAYS

Our students progress to a wide range of leading universities, both in the UK and internationally. Equipped with strong academic foundations and valuable extracurricular experiences, they go on to pursue degrees in fields such as business, engineering, the sciences, and the arts. Their success reflects not only their ambition and dedication, but also the supportive and enriching environment they experienced during their studies with us.



**TOP LONDON DESTINATIONS**

- Imperial College London
- University College London
- King's College London
- Queen Mary University of London
- London School of Economics and Political Science
- Royal Holloway, University of London
- City St George's, University of London
- SOAS University of London
- Goldsmiths, University of London
- University of the Arts London (UAL)

**TOP EUROPEAN DESTINATIONS**

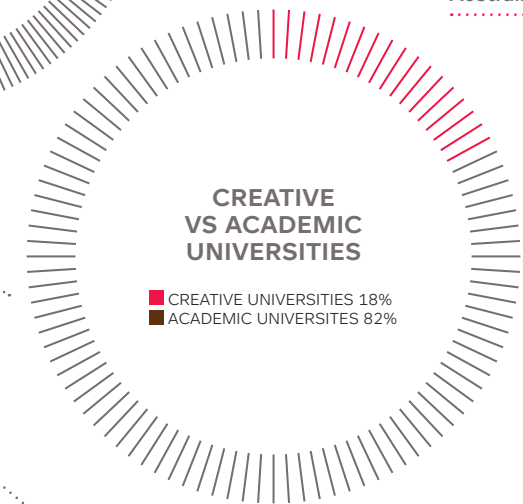
- Bocconi University, Milan
- ESCP Business School, Paris
- Frankfurt School of Finance & Management
- EBS University, Germany
- Les Roches, Switzerland
- Ecole Hôtelière de Lausanne
- University of St Gallen, Switzerland
- University of Debrecen, Hungary
- University of East Sarajevo, Bosnia
- University of Nicosia, Cyprus

**TOP US DESTINATIONS**

- Stanford University, California
- Babson College, Massachusetts
- Boston University, Massachusetts
- Northeastern University, Massachusetts
- Rutgers, New Jersey
- Syracuse, New York
- Bentley University, Massachusetts
- University of Arizona
- Temple University, Pennsylvania

**TOP INTERNATIONAL DESTINATIONS**

- The Chinese University of Hong Kong
- Keio University, Japan
- Tokyo Metropolitan University, Japan
- Atinbus University, Istanbul Turkey
- FAAP Fundação Armando Álvares Penteado, Brazil
- Artlaxy Institute, Shanghai
- NSW University, Australia



## ACADEMIC INTEGRATION SHORT COURSES

### Core subjects include:

English language  
Mathematics  
Science  
Humanities  
Creative subjects

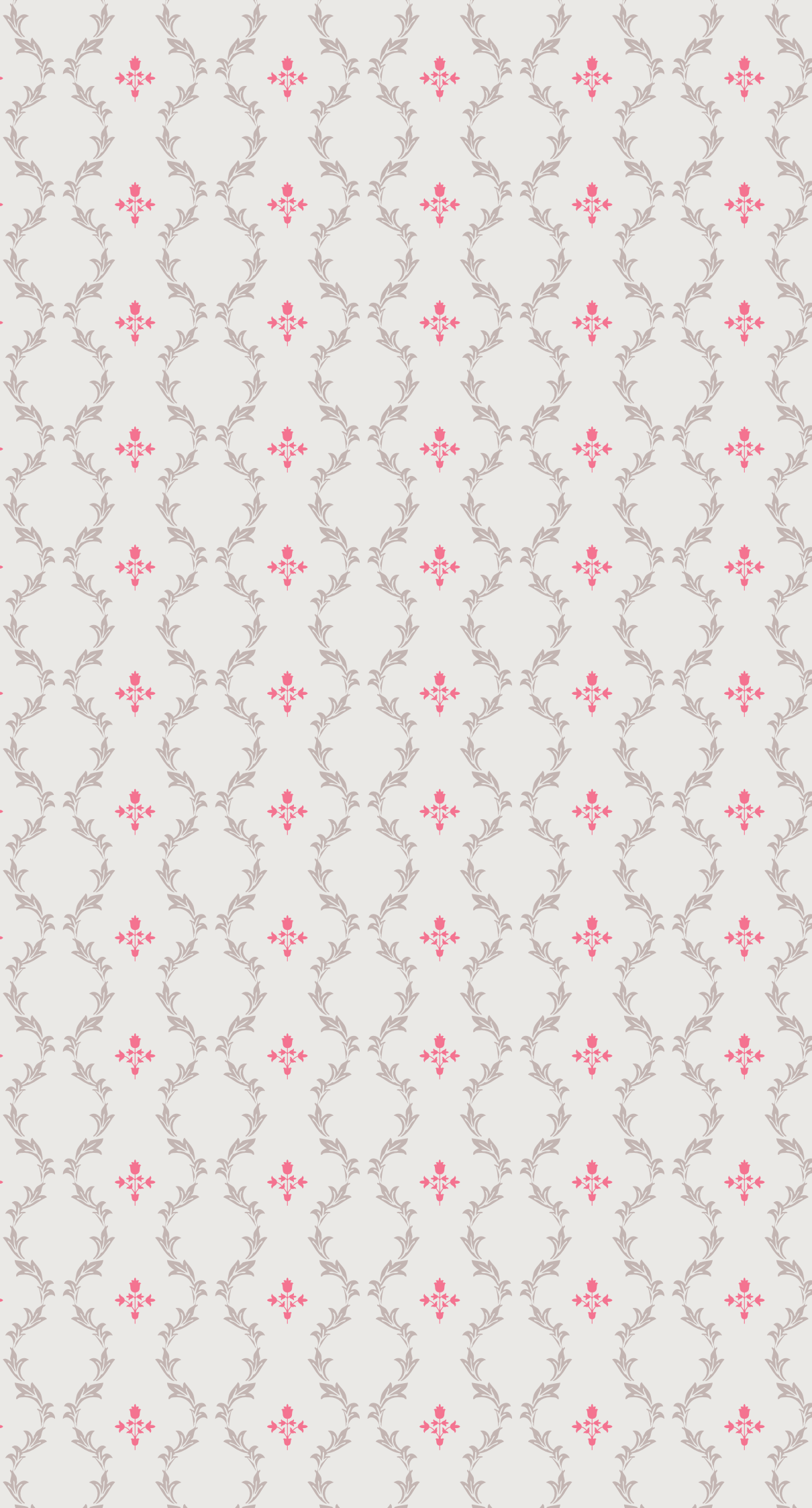
The Academic Integration programme is an immersive academic and cultural experience for international students aged 15–18. It can be taken for one month, one term, or two terms during the academic year.

Students follow a balanced curriculum designed to strengthen subject knowledge, improve English and build confidence for future international study. Beyond the classroom, they are fully integrated into school life, taking part in sports, creative activities and cultural experiences alongside full-time students — gaining a genuine insight into British boarding school life.

### KEY FEATURES

For international students aged 15–18  
An immersive academic and cultural programme  
Available for one month, one term or two terms  
Strengthens subject knowledge and English  
Builds confidence for future international study  
Students join classes with full-time Earlscliffe students  
Take part in sports, creative and cultural activities  
Experience authentic British boarding school life





## A LETTER FROM OUR FOUNDERS

When we first acquired our main building in 2011, it stood empty and disused, but we could already see what it might become. A year later that vision became reality — thanks to determination, hard work and a close sense of purpose, all of which we encouraged in generations of our students.

We created Earlscliffe to offer something different from larger institutions: a school where every student is known, supported and challenged to achieve the best. Studying away from home is a big step, and that understanding shapes everything we do — from our teaching and university guidance to the pastoral care that helps students feel secure, confident and ready to thrive. We strongly feel that a ‘layering’ of experiences, throughout these pivotal years in a young person’s life, contributes hugely to the adult character and outlook they eventually assume. Such experiences vary from public speaking to volunteering in the wider, local community, and from hearing global politicians at the LSE to marvelling at a Mozart piano concert at London’s Wigmore Hall.

As we often say — to our own children as well as to our students — be ambitious, and make an impact.

Despite being a history teacher, it was a Nobel Prize-winning physicist’s infectious energy and drive that once inspired Tim’s approach to working with young people, when Richard Feynman stated that ‘the highest forms of understanding we can achieve are laughter and human compassion.’

We would love to meet you at Earlscliffe to talk about vision, not for a building anymore, but for a future — yours.

Tim and Julie Fish  
Founders

# EXCEL

## Excelling in education: rigorous tracking, personalised teaching and a culture of high achievement

This integrated approach to teaching and learning combines rigorous assessment, targeted support and high-quality teaching to optimise academic progress:

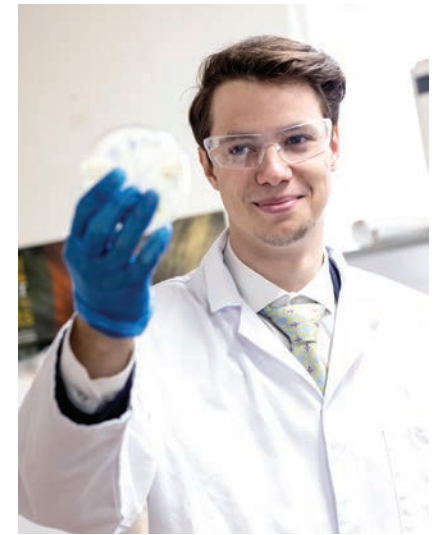
- » TRaC™ — a disciplined, transparent system of assessment and support, including:
  - ~ regular academic testing
  - ~ clear performance tracking over time
  - ~ targeted academic coaching and structured support.
- » Small class sizes — an average of seven students per class.
- » Intensive teaching — more teaching time per subject.

The EPQ (Extended Project Qualification) is highly regarded by UK universities and supports strong undergraduate applications.



'The atmosphere was very friendly, inclusive and multicultural. Being based in Folkestone made my experience even more special, with its beautiful coastline.'

Jeren, Turkmenistan  
(GCSE and A-level)  
Medical Imaging,  
University of Exeter



# ENABLE

## Enabling international learners to compete at the highest level

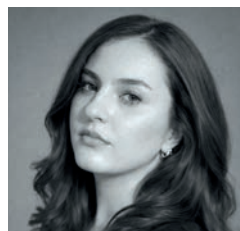
### English Language Centre of Excellence

Earlscliffe is an official test centre for both Cambridge and IELTS examinations.

Highly experienced teachers of English as a second language deliver focused, high-quality instruction.

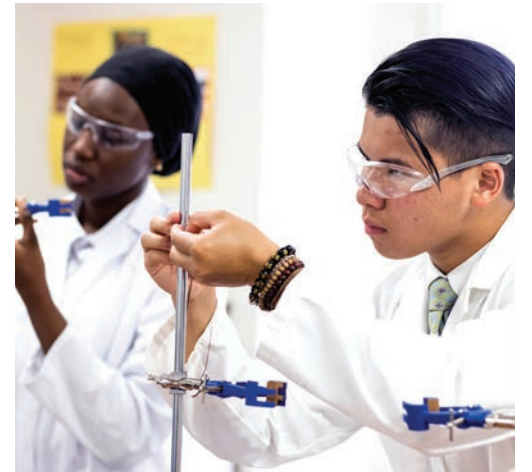
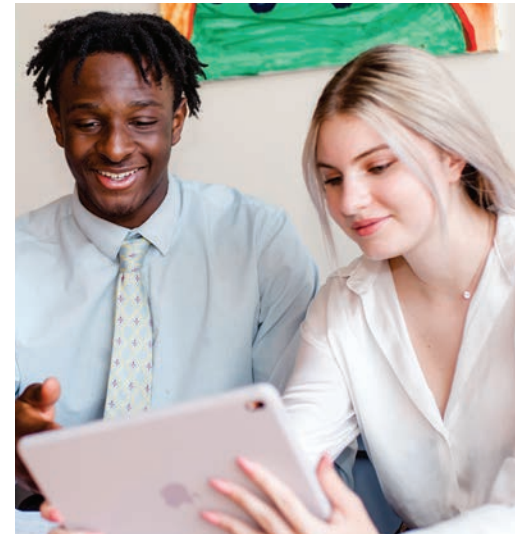
A cross-curricular, collaborative approach supports the development of subject-specific vocabulary and academic terminology.

Students are prepared for LAMDA and ESB (English Speaking Board) assessments.



'My time at Earlscliffe was truly formative, sparking my interest in global markets and instilling a strong academic foundation that continues to support my ongoing learning and career.'

Nicoletta, Romania (A-level)  
Economics & Management,  
University of Bristol



# Empower

## Empowering young people to choose meaningful career pathways

### The Careers Institute

Our students receive expert UCAS guidance, along with personal statement and interview preparation.

In partnership with Dukes Plus, Earlscliffe students also benefit from the expert advice of sector-leading consultancies:

- » Oxbridge Applications – intensive test and interview preparation
- » Medic Portal – University Clinical Aptitude Test (UCAT) and interview preparation
- » Lawyer Portal – National Admissions Test for Law (LNAT) preparation
- » A-List Education – guidance on applying to North American universities
- » InvestIN – diagnostic careers assessment and immersive career experiences.



'The strong teaching and focused learning environment, combined with a welcoming atmosphere and an international community of students from all over the world, was truly special.'

Estelle, Germany  
(University Foundation Year)  
Business Administration &  
Economics, University of  
St Gallen, Switzerland



# Enrich

## Enriching the curriculum with creative, future-driven micro-credentials

Short, high-value academic courses are included in the weekly timetable, including:

- » Sustainable Futures
- » Mini-MBA™
- » Artificial Intelligence
- » Digital Strategy & Media Literacy
- » Leadership.

Academic societies offer access to external lectures, debates and events at the London School of Economics (LSE), University College London (UCL) and the Cambridge Science Festival.

One of the very few UK UNESCO schools, with a strong commitment to the Model United Nations (MUN).



'Beyond the classroom, Earlscliffe gave me countless opportunities to grow, from UNESCO cultural exchanges and extracurriculars, to simply learning to be more independent and confident.'

Harry, Myanmar (A-level)  
Chemical Engineering,  
Queen's University Belfast



# Extend

**Extending knowledge,  
skills and endeavour.  
Be ambitious!**

## **Sport, Culture and Service (SCS)**

SCS provides balance and structure to college life. It includes:

- » weekly sport, physical activity and wellbeing provision
- » cultural engagement through theatre visits and exhibitions
- » service and leadership opportunities at Earlscliffe and in the wider community
- » weekend trips and activities programme of events

High Performance Programmes for boys and girls include:

- » basketball — in partnership with Folkestone Saints
- » football — in partnership with Tottenham Hotspur Football Club



'With the support from a team of people who care about me as a person, I was able to balance a challenging basketball training schedule with my academic needs. I'd recommend this experience to anybody!'

Arthur, Brazil  
Management, Insper,  
Sao Paulo, Brazil



## FOOTBALL DEVELOPMENT PROGRAMME



FOOTBALL DEVELOPMENT PARTNER

Delivered in partnership with Tottenham Hotspur Football Club, this programme provides a full-time pathway combining high-quality football coaching with academic study and university preparation.

Designed for girls and boys aged 15–19, it allows students to pursue football seriously while maintaining a strong academic foundation. Coaching is integrated into the school week so training and study work together rather than competing for time.

Students train in a high-quality environment that develops technically skilled, tactically aware, physically prepared and mentally resilient players, while also supporting future university pathways in the UK or the United States.

### KEY FEATURES

- ..... Tottenham Hotspur Development Coach at Earlscliffe
- ..... Professional coaching within the school timetable
- ..... Advanced technical training and competitive fixtures
- ..... Strength and conditioning with fitness and nutrition guidance
- ..... Individual development targets and performance reviews
- ..... Tottenham Hotspur experiences, including matchdays and training centre visits
- ..... US university pathway support, including SAT preparation and scholarships



### SAMPLE WEEKLY SCHEDULE

- ..... Mon: Technical skills, 1v1s, passing, shooting
- ..... Tue: Tactical training, shape, pressing, unit play
- ..... Wed: Match day — league/cup fixtures
- ..... Thu: Strength, conditioning & functional training
- ..... Fri: Video analysis and tactical review



## BASKETBALL SKILLS ACADEMY

The Earlscliffe Basketball Academy allows students to combine serious basketball development with academic study in a structured and supportive environment.

Students train regularly with an experienced professional coaching team focused on improving technical ability, game understanding and physical performance, while also developing teamwork, leadership, resilience and a positive competitive mindset.

Players take part in regular competitive matches as members of Folkestone Saints Basketball Club, gaining access to a National League pathway with a strong emphasis on player development. Consistent training and expert coaching help committed players reach their full potential, while staying fully engaged with their studies.

### KEY FEATURES

- ..... Daily basketball training
- ..... Regular competitive match play
- ..... Professional coaching from Level 3 coaches
- ..... Membership of Folkestone Saints Basketball Club
- ..... Small-group and one-to-one skills coaching
- ..... Opportunities to gain coaching and refereeing qualifications
- ..... Sports psychology
- ..... Guidance on health, fitness and nutrition





**At Earlscliffe, every child is cared for, supported, and encouraged to thrive — academically, socially, and emotionally.**

### **Support and wellbeing**

At Earlscliffe, students thrive with strong academic and emotional support. This includes close teamwork between staff, a qualified school nurse, and small classes with personalised attention.

### **Boarding life**

There are six boarding houses, with boys and girls living separately. Each is led by a House Manager who supports students daily and stays in touch with parents. Houses offer comfortable single or twin en-suite rooms and shared common rooms, kitchens and gardens to relax and socialise.

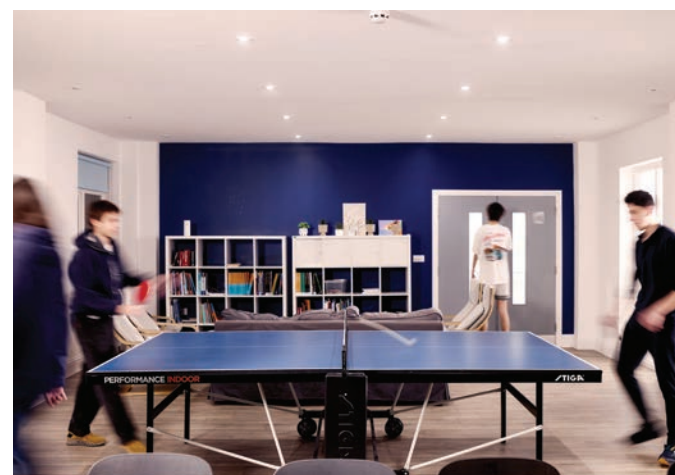
### **Meals and community**

Fresh, healthy meals are served daily, with varied options including vegetarian dishes, plus a quick 'express' lunch option.



'What stood out immediately was how small and welcoming the school was — you genuinely knew everyone, which made the boarding environment feel warm, familiar, and easy to settle into.'

Hannah, Germany  
International Relations,  
Royal Holloway, University  
of London



# Earlscliffe

**Earlscliffe**  
29 Shorncliffe Road  
Folkestone, CT20 2NB  
United Kingdom  
T: +44 (0)1303 253951  
E: admissions@earlscliffe.co.uk  
earlscliffe.co.uk

Earlscliffe is a UNESCO associated school and is committed to the UNESCO mission.

Earlscliffe Ltd is part of Dukes Education, registered in England No. 4091830. UKVI Student Sponsor Licence number: OQPJH1F1X.

Dukes Education is a family of schools and educational services based in the UK. Our schools are unique in identity and style yet united in offering outstanding teaching and learning which provides the strongest of foundations for our young people to lead meaningful and fulfilling lives.

Earlscliffe is registered with the UK Department for Education as an independent boarding school: number 886/6138.



Accredited by the  
**BRITISH COUNCIL**  
for the teaching  
of English in the UK



## Enrolling at Earlscliffe, admissions, orientation and entry requirements for a supportive and academically ambitious learning environment.

### Orientation

All new students attend Orientation at the start of their first term in September. Sessions focus on introductions to staff and fellow students; understanding the college's expectations for behaviour and compliance with Earlscliffe rules and UK law; essential study skills; an overview of the A-level and GCSE systems and university entry; how the Earlscliffe community works and lives together; the 'Sports, Culture and Service' (SCS) programme; and TRaC™, our system of continuous assessment and improvement.

### Entry process

Our admissions process is designed to be clear and straightforward.

Applicants are asked to:

- » Submit school reports from the previous two years (in English)
- » Complete the online application form
- » Pay the registration fee
- » Demonstrate the required English level: IELTS 4.5 (or equivalent) for one-year GCSE, or IELTS 5.5 (or equivalent) for A-level and Year 13 programmes
- » Attend an interview, either in person or online
- » Complete the relevant academic assessment tests under exam conditions.

# ENROL

